



Refractory Products

## Compression Testing Machine MEGA 11-600 DM1-S

- accuracy acc. to  
DIN EN ISO 7500-1, class 1
- for the cold crushing strength on material specimens especially acc. to EN 993-5, EN 1402-6, EN 1094-5, ISO 8895, ISO 10059-1, ISO 10059-2
- with accessories / options also for cored specimens acc. to EN 12504-1 and E-modulus measurements as well as compressive strengths on cement and mortar acc. to EN 196 / EN 1015
- automatic load increase by digital controller **DIGIMAXX® C40** with servo valve in closed loop system with nominal-actual value comparison

### Technical Data – Test Frame

- test load max.: 600 kN
- piston stroke: 50 mm
- upper pressure plate: Ø 210 mm
- lower pressure plate: Ø 210 mm
- hardness of pressure plates: 53 HRC
- test area height: 320 / 270 mm
- inner width of test frame: 250 mm
- measuring range: 6,00 ... 600 kN
- display area: 0 ... 600 kN
- force measurement by an electronic precision load sensor (DMS)
- electric supply: 3x 400 Volt, 50 Hz, 3.5 kW
- weight: approx. 850 kg



### Technical Data – Digital Controller

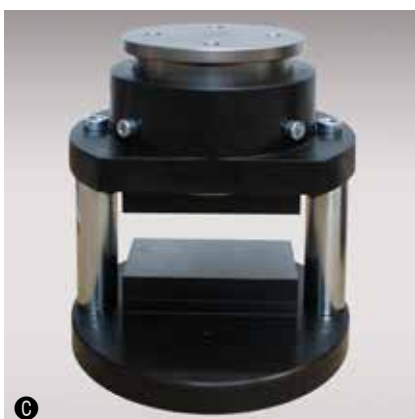
- capacitive and robust 7" touch display
- PID-controller with DSP processor
- modular system with expansion options up to 8 control and measuring channels – 18 Bit
- measuring- and control cycle 2 kHz
- transmission of measured value up to 1 kHz
- freely programmable test sequences
- real-time display of the measuring channels as well as of the specimen strengths and test speed
- authorization model with different role and access authorizations (tester, laboratory manager, service technician, administrator)
- automatic and manually zero-adjustment
- adjustable break detection
- adjustable piston back-travel time
- specimen storage for test results
- 6 digital inputs galvanically isolated
- 9 potential-free relay outputs
- USB port for data export
- Ethernet connection for communication with PC software

### Options:

- A** compression device DV 600 with pressure plates  $\varnothing$  60 mm
- B** compression device DV 600 AZ with pressure plates 40 x 40 mm mm
- C** compression device DV 1000 RF with pressure plates 65 x 120 mm
- D** E-modulus measuring equipment
  - test software **PROTEUS<sup>MT</sup>**
  - electronic piston stroke measuring and control equipment
  - oil / water cooler

### available with following test loads:

- for compression test:  
500 kN, 600 kN, 1000 kN and 1200 kN



**FORM+TEST Seidner & Co. GmbH**  
Zwiefalter Str. 20 • D-88499 Riedlingen

☎ +49 (0) 7371 9302-20 • 📠 -99  
www.formtest.de  
sales@formtest.de