



EN 12390-1 - EN 12390-2

Making Specimens for Strength Tests

❶ Specimen Cube Mould System: FORM+TEST

- for making test cubes
- two-parts version made of special steel
- base plate diagonally split
- simple and quick assembly
- short cleaning time
- dimensions: 150 x 150 x 150 mm
- weight: 9.5 kg
- Order-No. B1531

❷ Specimen Cube Mould System: FORM+TEST

- for making test cubes
- two-parts version made of special steel
- base plate diagonally split
- simple and quick assembly
- short cleaning time
- dimensions: 100 x 100 x 100 mm
- weight: 5.0 kg
- Order-No. B1533

Accessories:

❸ Adapter Frame

- for cube mould B1531
- Order-No. B1536

❹ Adapter Frame

- for cube mould B1533
- Order-No. B1538

❺ Bevelled Straight Edge

- made of steel, with bevel
- length: 400 mm
- Order-No. B1613

❻ Label for Concrete Cubes

- for specimen cube moulds
- made of plastic, yellow, printed
- dimensions: 110 x 60 mm
- packing unit = 250 pcs.
- Order-No. B1512

❼ Label for Concrete Cubes

- for specimen cube moulds
- made of plastic, grey, printed
- dimensions: 145 x 145 mm
- packing unit = 100 pcs.
- Order-No. B152130



A Specimen Cube Mould

Type: Ready

- for making test cubes
- one-piece version made of special plastic, CFC-free, black, smooth surface
- circumferential grip edge in the middle serves as reinforcement
- low-wear and of stable shape
- base plate with hole
- for demoulding by water pressure or compressed air
- dimensions: 150 x 150 x 150 mm
- weight: 1.95 kg
- Order-No. B1521



B Specimen Cube Mould

- light version
- for making test cubes
- one-piece plastic version, grey
- circumferential grip edge in the middle serves as reinforcement
- base plate with hole
- for demoulding by water pressure or compressed air
- dimensions: 150 x 150 x 150 mm
- weight: 1.70 kg
- Order-No. B1515



C Cover

- for specimen cube mould B1515, B1521 and B1513
- Order-No. B1516

D Specimen Cube Mould

- for making test cubes
- two-parts plastic version (plastic/casting)
- with screwed cast iron base plate with hole
- for demoulding by water pressure or compressed air
- dimensions: 150 x 150 x 150 mm
- weight: 4.55 kg
- Order-No. B1513



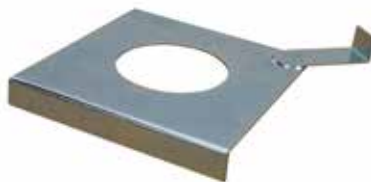
A



B



C



E



F

Accessories:

A Demoulding Frame

- for specimen cube moulds B1515, B1521, and B1513
- Order-No. B1511

B Mould Inserts 200 mm

- made of steel
- for making plates for the water permeability test acc. to DIN 1048
- dimensions: 200 x 200 x 80 mm
- Order-No. B1610

C Mould Inserts 150 mm

- made of plastic
- for making plates for the water permeability test acc. to DIN 1048
- dimensions: 150 x 150 x 30 mm
- Order-No. B1611

D Roughening Template 150 mm

- Ø 75 mm
- for specimen cube mould 150 x 150 mm
- Order-No. B16121

E Blow Gun

- with 10 m hose and adapter
- for cube moulds B1515, B1521 and B1513
- Order-No. B15200

F Plastic Plugs

- packing unit = 100 pcs.
- for cube moulds B1515 and B1521
- Order-No. B15211

Teflon-Cuts for CDF-Test (not shown)

- dimensions: 150 x 150 x 2 mm
- Order-No. B1615



Accessories:

A Cube Tongs

- for test cubes 150 x 150 mm
- Order-No. B2114

B Cube Tongs

- for test cubes 150 x 150 mm
- long version
- Order-No. B21140

C Bevelled Straight Edge

- made of steel, with bevel
- length: 400 mm
- Order-No. B1613

D Label for Concrete Cubes

- for specimen cube moulds
- made of plastic, yellow, printed
- dimensions: 110 x 60 mm
- packing unit = 250 pcs.
- Order-No. B1512

E Label for Concrete Cubes

- for specimen cube moulds
- made of plastic, grey, printed
- dimensions: 145 x 145 mm
- packing unit = 100 pcs.
- Order-No. B152130

F Straight Edge

- length 300 mm
- stainless steel
- hardened and ground
- with hand heat protection
- incl. synthetic leather case
- Order-No. S1404

G Knife-edge Square

- stainless steel
- incl. wooden case
- Order-No. S1405

H Feeler Gauge

- 20 blades (0.05 - 1.0 mm)
- stainless steel
- blade length 100 mm
- Order-No. S1406

I Circular Level

- for checking the horizontal position of instruments
- Ø 25 mm
- Order-No. S1409



Ⓐ Specimen Cylinder Mould

- for making cylindrical specimens
- two-parts version made of special steel
- "spring form"
- laterally slotted cylinder tube screwed to the base plate
- dimensions: Ø 150 x 300 mm
- weight: 7.6 kg
- Order-No. B16011

Ⓑ Specimen Cylinder Mould

- for making cylindrical specimens
- two-parts version made of special steel
- "spring form"
- laterally slotted cylinder tube screwed to the base plate
- dimensions: Ø 100 x 200 mm
- weight: 4.5 kg
- Order-No. B16021

Ⓒ Specimen Cylinder Mould

Type: Ready

- for making cylindrical specimens
- one-piece version made of special plastic, CFC-free, black, smooth surface
- circumferential grip edge in the middle serves as reinforcement
- low-wear and of stable shape
- base plate with hole
- for demoulding by water pressure or compressed air
- dimensions: Ø 150 x 300 mm
- weight: 2.9 kg
- Order-No. B16071



Ⓓ Specimen Cylinder Mould

Type: Ready

- for making cylindrical specimens
- one-piece version made of special plastic, CFC-free, black, smooth surface
- circumferential grip edge in the middle serves as reinforcement
- low-wear and of stable shape
- base plate with hole
- for demoulding by water pressure or compressed air
- dimensions: Ø 160 x 320 mm
- weight: 3.1 kg
- Order-No. B16091



Accessories:

Ⓐ Adapter Frame

- for cylinder mould B16011
- Order-No. B16041

Ⓑ Adapter Frame

- for cylinder mould B16021
- Order-No. B16051

Ⓒ Adapter Frame

- for cylinder mould B16071
- Order-No. B16081

Ⓓ Demoulding Frame

- for cylinder mould B16071
- Order-No. B16072

Ⓔ Blow Gun

- with 10 m hose and adapter
- for cylinder moulds B16071 and B160
- Order-No. B15200

Ⓕ Cylinder-Tongs

- for cylindrical specimens Ø 150 x 300 mm
- Order-No. B21148



A Beam Mould

- for making test beams
 - two-parts version made of special steel
 - screwed to the base plate
 - dimensions: 700 x 150 x 150 mm
 - weight: 41 kg
- Order-No. B15241

B Beam Mould

- for making test beams
 - two-parts version made of special steel
 - screwed to the base plate
 - dimensions: 500 x 100 x 100 mm
 - weight: 25 kg
- Order-No. B15251

C Beam Mould

- for making test beams
 - two-parts version made of special steel
 - screwed to the base plate
 - dimensions: 360 x 120 x 120 mm
 - weight: 20 kg
- Order-No. B15262

Accessories:

D Adapter Frame

- for beam mould B15241
- Order-No. B15271

Insert for Length Reduction 600 mm (not shown)

- for 600 mm
 - made of plastic
 - for beam mould B15241
- Order-No. B152411

E Adapter Frame

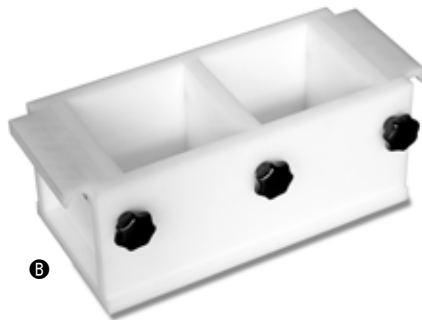
- for beam mould B15251
- Order-No. B15281

F Adapter Frame

- for beam mould B15262
- Order-No. B15292



A



B



C



D



E

Special Plastic Moulds for Making Test Specimens

Ⓐ Triple Cube Mould

- for making 3 test specimens at the same time
 - dimensions: 50 x 50 x 50 mm
- Order-No. B1580

Ⓑ Double Cube Mould

- for making 2 test specimens at the same time
 - dimensions: 150 x 150 x 150 mm
- Order-No. B1560

Ⓒ Triple Cube Mould

- for making 3 test specimens at the same time
 - dimensions: 150 x 150 x 150 mm
- Order-No. B1562

Triple Cube Mould

- for making 3 test specimens at the same time
 - dimensions: 100 x 100 x 100 mm
- Order-No. B1566 (not shown)

Ⓓ Mould for Square Plates

- dimensions: 600 x 600 x 100 mm
- Order-No. B15268

Ⓔ Beam Mould

- dimensions: 600 x 150 x 150 mm
- Order-No. B15248

Beam Mould

- dimensions: 900 x 150 x 150 mm
- Order-No. B15244 (not shown)

Beam Mould

- dimensions: 700 x 150 x 150 mm
- Order-No. B15246 (not shown)

Beam Mould

- dimensions: 540 x 150 x 150 mm
- Order-No. B15249 (not shown)



FORM+TEST Seidner & Co. GmbH

Zwiefalter Str. 20 • D-88499 Riedlingen

phone: +49 (0) 7371 9302-20 • fax: -99

www.formtest.de

sales@formtest.de