

Special-Plastic-Moulds for Production of Specimens

made of white special plastic (Hakorit)

- very low-wear
- stiffened against bending and unbreakable
- self-lubricated
- easy cleaning because no cement or mortar adheres
- no rust possible
- no much time necessary for cleaning
- temperature for use max. +80°C
- temperature for use min. -30°C

A Three Gang Mould

- for simultaneous production of 3 test specimens
- dimensions: 40 x 40 x 160 mm
- Order-No. B270940

B Six Gang Mould

- for simultaneous production of 6 test specimens
- dimensions: 40 x 40 x 160 mm
- Order-No. B270942

C Three Gang Mould

- for simultaneous production of 3 test specimens
- dimensions: 230 x 64 x 54 mm
- Order-No. B270950

D Triple Cylinder Mould

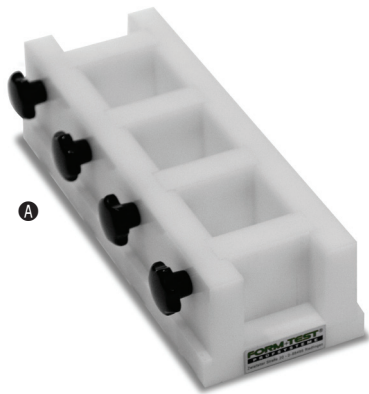
- for simultaneous production of 3 test specimens
- dimensions:
diameter: 50 mm
height: 50 mm
- Order-No. B16090

Triple Cylinder Mould

- for simultaneous production of 3 test specimens
- dimensions:
diameter: 36 mm
height: 36 mm
- Order-No. B16092

E Cylinder Mould

- demoulding by separating the 2 half shells (star grips)
- steel base for magnetic clamping
- dimensions test specimen:
Ø 100 x 300 mm
- external dimensions:
approx. 140 x 260 x 330 mm
- weight: approx. 5 kg
- Order-No. B16094



Special-Plastic-Moulds for Production of Specimens

Ⓐ Triple Cube Mould

- for simultaneous production of 3 test specimens
- dimensions: 50 x 50 x 50 mm
- Order-No. B1580

Ⓑ Double Cube Mould

- for simultaneous production of 2 test specimens
- dimensions: 150 x 150 x 150 mm
- Order-No. B1560

Ⓒ Triple Cube Mould

- for simultaneous production of 3 test specimens
- dimensions: 150 x 150 x 150 mm
- Order-No. B1562

- for simultaneous production of 3 test specimens
- dimensions: 100 x 100 x 100 mm
- Order-No. B1566 (without picture)

Ⓓ Test Mould for Square Plates

- dimensions: 600 x 600 x 100 mm
- Order-No. B15268

Ⓔ Beam Mould

- dimensions: 900 x 150 x 150 mm
- Order-No. B15244 (without picture)
- dimensions: 700 x 150 x 150 mm
- Order-No. B15246 (without picture)
- dimensions: 600 x 150 x 150 mm
- Order-No. B15248 (see picture Ⓔ)
- dimensions: 540 x 150 x 150 mm
- Order-No. B15249 (without picture)
- dimensions: 360 x 120 x 120 mm
- Order-No. B15265 (without picture)

Double Beam Mould

- dimensions: 360 x 120 x 120 mm
- Order-No. B15264 (without picture)



FORM+TEST Seidner & Co. GmbH
Zwiefalter Str. 20 • D-88499 Riedlingen

☎ +49 (0) 7371 9302-20 • 📠 -99
www.formtest.de
sales@formtest.de