



Hydraulic Aggregates Series PA



Hydraulic Aggregates - Description

In order to be able to apply loads to test specimens in testing machines or test frames, for example, hydraulic linear cylinders or rotary drives are used. They offer an economical solution especially for large forces and moments. In addition, hydraulic components require almost no maintenance and are very durable.

For this application, a suitable supply of a reliable hydraulic aggregate is required. FORM+TEST's PA series hydraulic aggregates are available in small sizes up to large central supply systems. We take over the complete design and planning of the system - exactly matching the required flow rate.

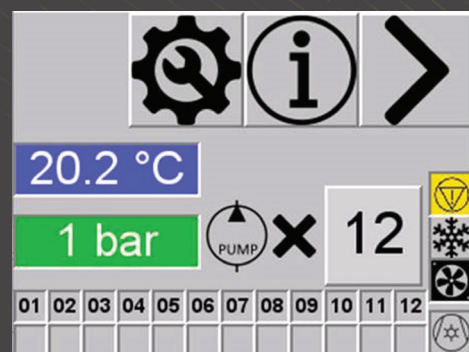
Highly efficient and reliable pump motors are used for the PA hydraulic aggregates in order to achieve maximum efficiency and service life. This reduces running costs while keeping service and maintenance costs low.

Further energy saving potentials are already being implemented, as all pumps are operated with a demand-controlled pump delivery rate and with automatic switching on and off of individual pump heads if several are installed.

FORM+TEST aggregates are equipped with a modern and user-friendly control system via touch panel, which allows to display the most important operating parameters and which also monitors the limit values for oil level and temperature, also by remote diagnosis via Internet.



PA 19



Touch-Panel

Hydraulic Aggregates - Extensions

In addition to a permanent and friction-free operation of the plant, environmental safety is very important. It must be ensured that no hydraulic oil can enter external circuits. For this purpose, the cooling of the aggregate can be equipped with a special double-wall cooler or a closed cooling circuit with an air cooler can be integrated. If additional protection against leakage is required due to external specifications in the laboratory and testing area, FORM+TEST aggregates are equipped with a suitable oil pan and transport frame.

If no sufficient cooling supply can be guaranteed by the building technology and if a separate air cooler cannot be used due to the expected high outside temperatures well above 40°C, the aggregates from FORM+TEST can also be used and together with independent recoolers.

FORM+TEST aggregates are also well equipped in terms of occupational safety. According to the Occupational Health and Safety Ordinance and other guidelines such as DIN EN ISO 11690/1, limit values for the sound level of 80 dB(A) are required, up to which it is possible to work without separate hearing protection. Small hydraulic aggregates from FORM+TEST directly comply with these guidelines. For larger aggregates, additional soundproof cabins are required with which the noise level can be reliably reduced less than 70 dB(A) and thus the legal requirements can be met. If the hydraulic components, especially the connections, are not surrounded by a guard or in a separate room, a hose safety catch must be provided.



example sound insulation hood

Important Points Summarized:

- small to very large flow rates
- variable pump capacity and automatic switch-on
- meets all requirements for environmental and employee protection
- expandable with sound insulation cabins or additional independent cooling systems



FORM+TEST Seidner & Co. GmbH
Zwiefalter Str. 20
88499 Riedlingen
Deutschland

 +49 7371 9302-0
 +49 7371 9302-99
 info@formtest.de
 www.formtest.de



 made
in
Germany

